



BLUETICK[®]

www.bluetickinc.com





production

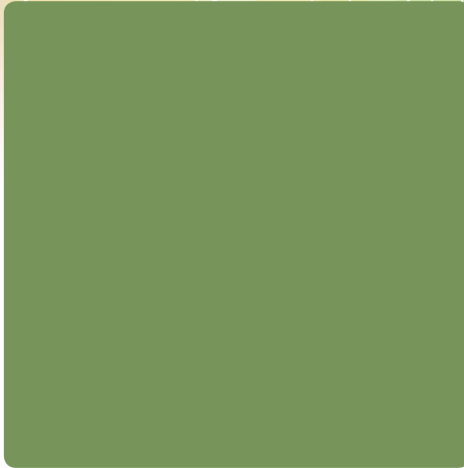


compliance



It's time to implement a Bluetick solution

Do more for less



operations

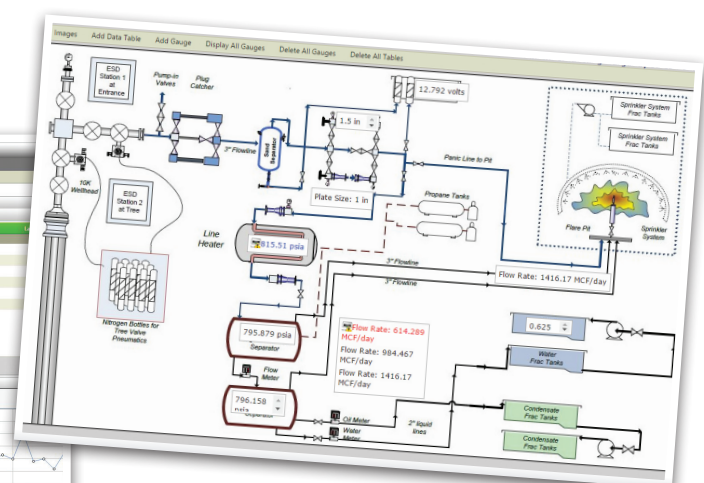
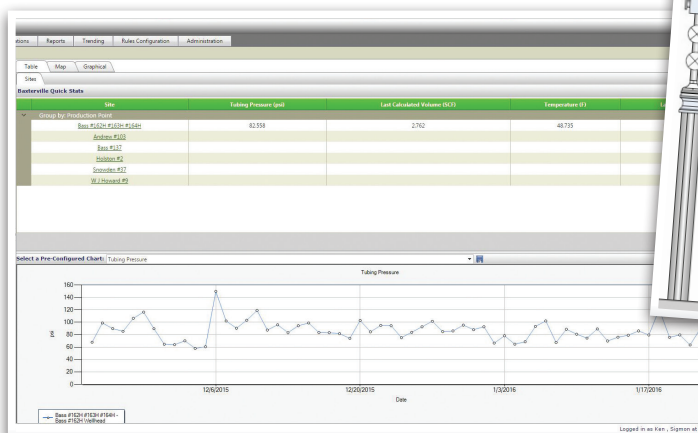
Are you getting the most from your assets?

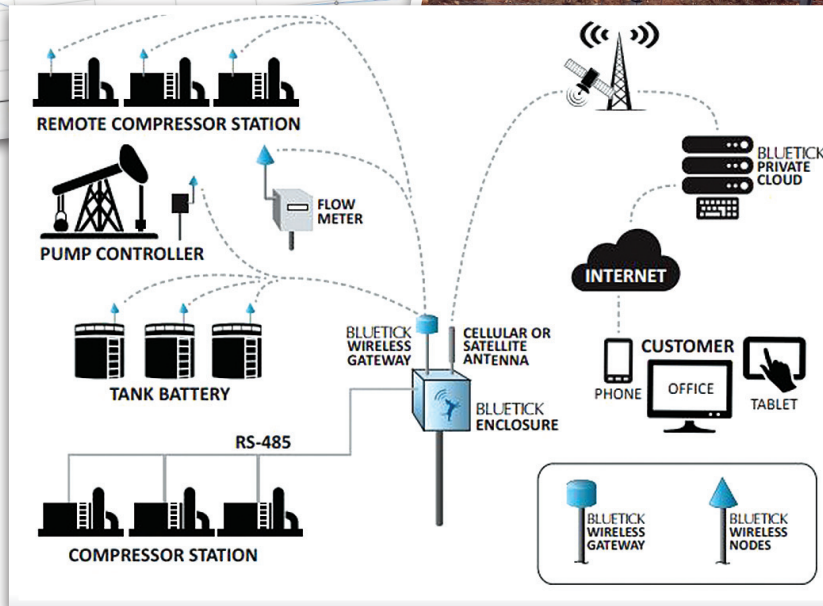
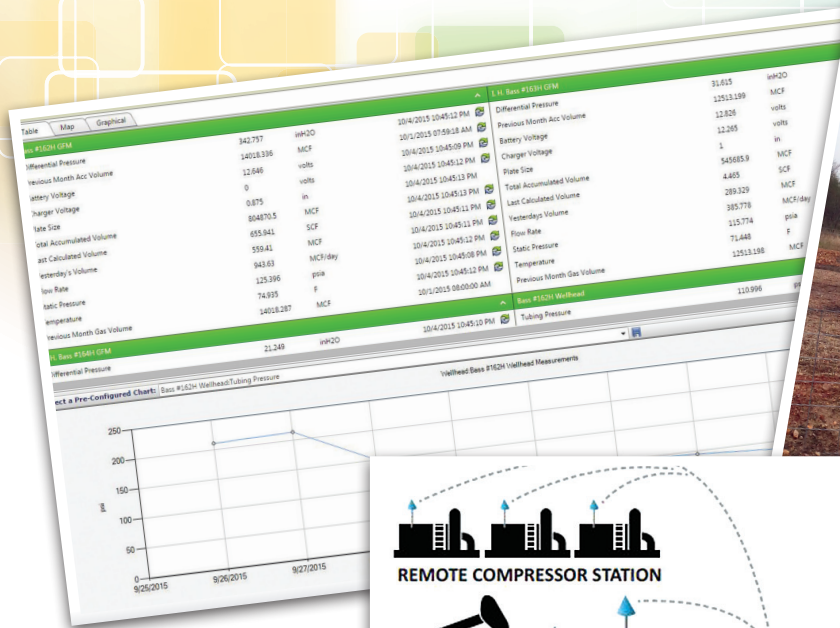
Commodity prices, strict Regulations, plus Health, Safety and Environmental concerns make it necessary to focus on effective and efficient production and operations management. Bluetick Solutions can save your company time and money.

- Manage operations using real-time field production data to increase production uptime, operational efficiencies, human safety, and environmental safeguards
- Utilize Data for production reporting, EPA reporting, customer reporting and State/ Municipalities reporting
- Share information between everyone in your organization to collaborate, resolve field issues quickly, extending the life of your field assets. All data is stored for easy retrieval and reporting
- Achieve operational excellence by standardizing and streamlining controls and processes in the field by feeding your production data to your Accounting and Land systems

Key Benefits

- Accurate Production Data and EPA reporting via remote monitoring with configurable reports and trends
- Remote shut-in reduces the risk of costly spills
- Data collection and analysis deters equipment failure and extends equipment life by early detection of anomalies
- Real-time data maximizes recovery by avoiding equipment failures and drives efficiency
- SMS alerts, Voice call outs and emails improve the response time to a field issue and maintain operational uptime
- Leverage existing hardware to minimize Capital Expenditures (CAPEX)
- Reduce the need for additional personnel and infrastructure expenses
- Information available 24/7 from anywhere in the world





Key Features

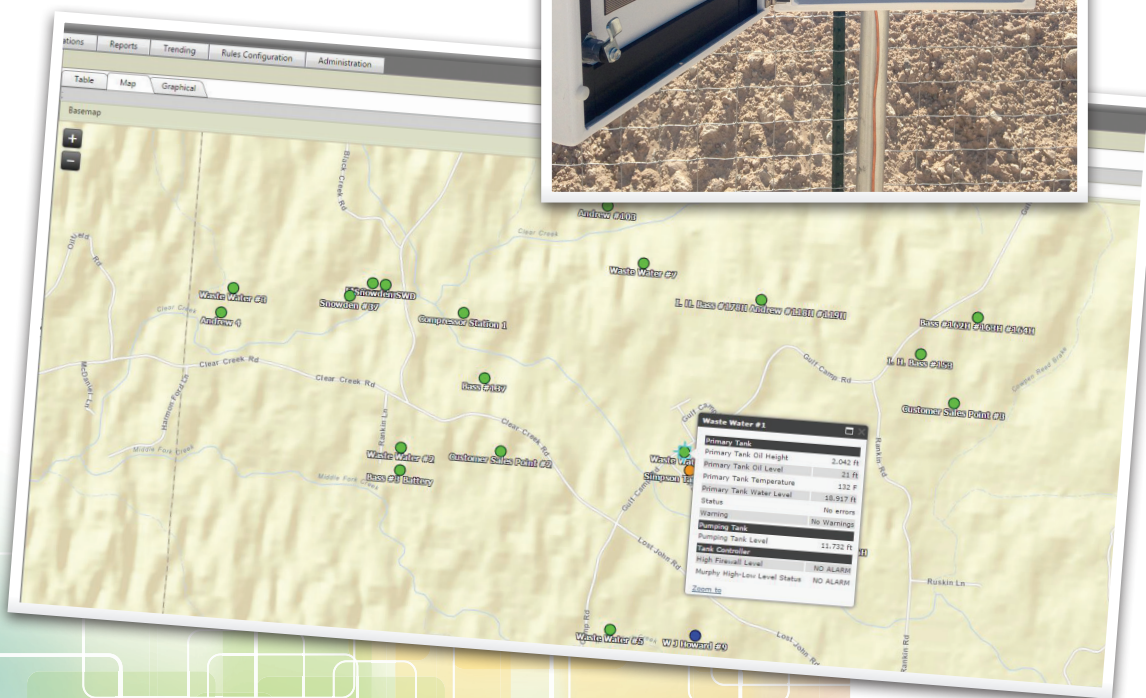
- Production Data is collected with Bluetick RMC Solutions
- Map view enables you to create optimal routes for your lease operators.
- SCADA view is a customizable view of your data and process
- Single data platform and Bluetick's Mobile App make it easy to view your data on desktops, laptops, and mobile devices
- Bluetick's RMC has bi-directional communication capabilities, it's not just a polling solution
- Create unlimited custom reports for internal management, accounting, land department, and regulatory agencies with an easy to use Graphical User Interface (GUI)
- Create simple or compound rules for any measurement on any device. Establish low, medium or high priorities. Actions available in the rules configuration menu include SMS message alerts, email alerts, or both
- Manual control allows users to change a value or state of a device via the Bluetick interface
- Automated Phone Callout (APC) dials a defined callout list when alarms occur
- Multilingual Support

Site Applications

With Bluetick site applications, you can ensure your wells will operate efficiently, minimize downtime, and avoid catastrophic failures and the lost revenue they represent. Bluetick products are used on production wells, wastewater, and Enhanced Oil Recovery (EOR) injection wells.

As with many other oilfield assets, having real-time access to site data gives you the information you need to make timely decisions. Whether monitoring well pressures, flow, or artificial lift equipment, Bluetick is there keeping you in touch with your wellsite and providing you peace of mind with real time information keeping a historical audit.

Bluetick has the integrated solution to meet your well monitoring needs.



Bluetick Field Data Capture App

Bluetick's Field Data Capture App can be used to manually capture oil or gas field production data for operations management and production reporting for E&P companies that are seeking to better manage their operations, to maximize production, and meet regulations. Reduce your cost and increase profitability by avoiding lost time, multiple paperwork trails. Your data is securely stored on the backend where it can be reported on spreadsheets and easily transferable to your accounting system.

Bluetick's App solution on the Graphical User Interface (GUI) is a web based platform that is accessible from anywhere in the world with an internet connection so your users have 24 hour access to their data. Bluetick's Field Data Capture App is a cost effective solution that can be up and running quickly, with zero capital expenditure required.

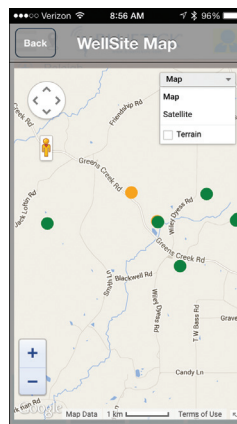
Key Features

- Oil Run Ticket and Water Run Ticket Entry
- Quick Entry of Well Servicing
- Quick Entry of Well Treatments
- Track Shut-In Status and History for a Well
- Track and Manage Well Issues
- Track and Manage Pumper Tasks
- Track and Manage Well or Pumper Logs
- Geo-tagging of site information is available

Key Benefits

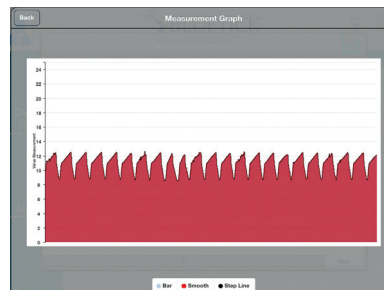
- Reduces time and errors in compiling production reports
- Operators can view a long history of entries, treatments, services and other logs to compare against current entries
- Simple and easy to use touch-sensitive interface
- Runs natively on iOS Apple or Android devices

See Site Location



View Site Data

Date	Avg	Max	Min
8/14/2015 8:40:35 AM	-19.386	-19.386	-19.386
8/14/2015 8:25:34 AM	-18.771	-18.771	-18.771
8/14/2015 8:10:32 AM	-17.694	-17.694	-17.694
8/14/2015 7:55:31 AM	-16.464	-16.464	-16.464
8/14/2015 7:40:30 AM	-17.848	-17.848	-17.848
8/14/2015	-17.079	-17.079	-17.079



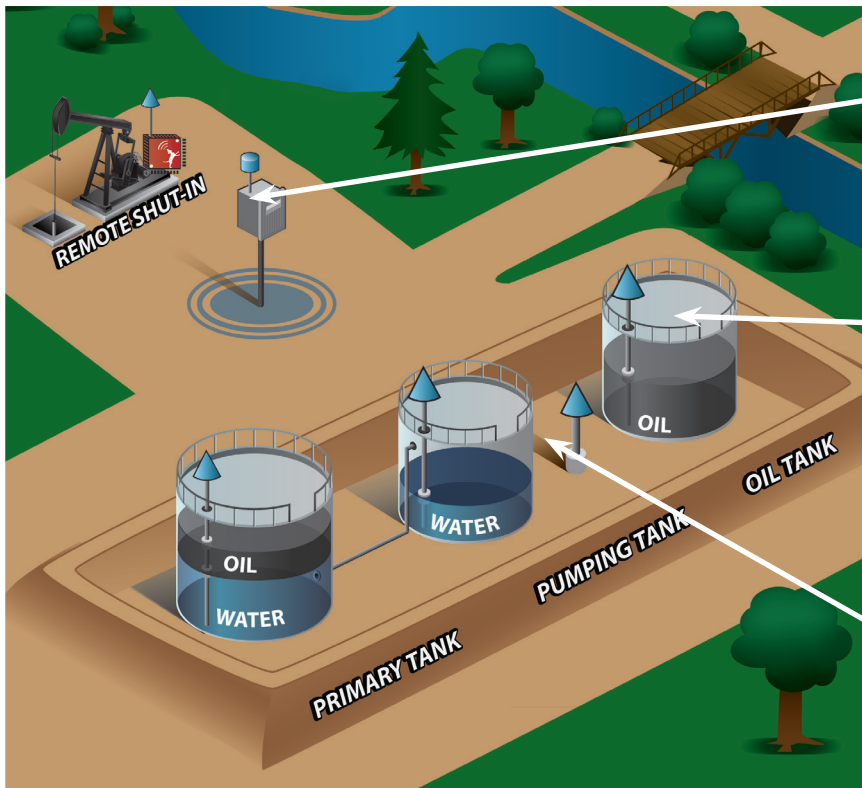
Graph Site Data



Field operations in the palm of your hand



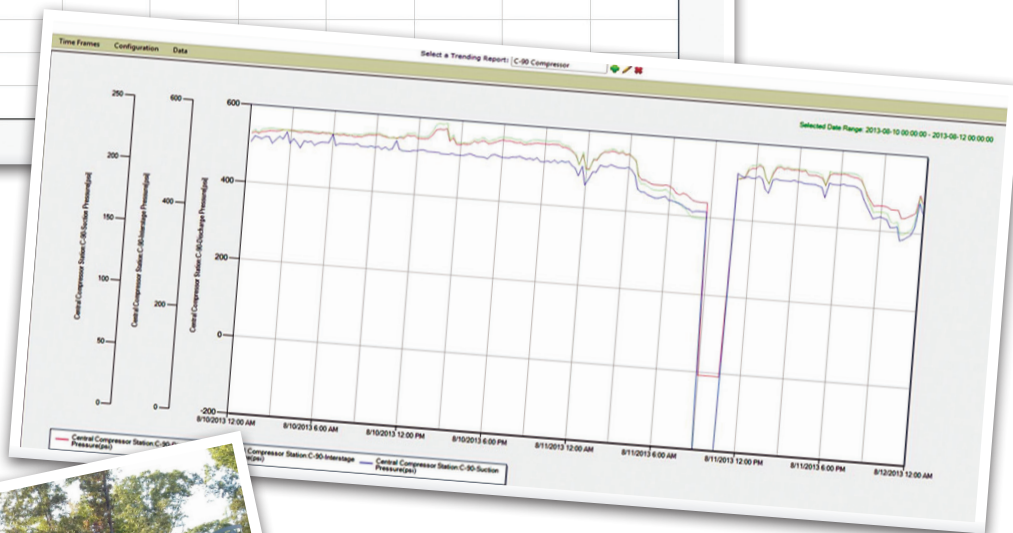
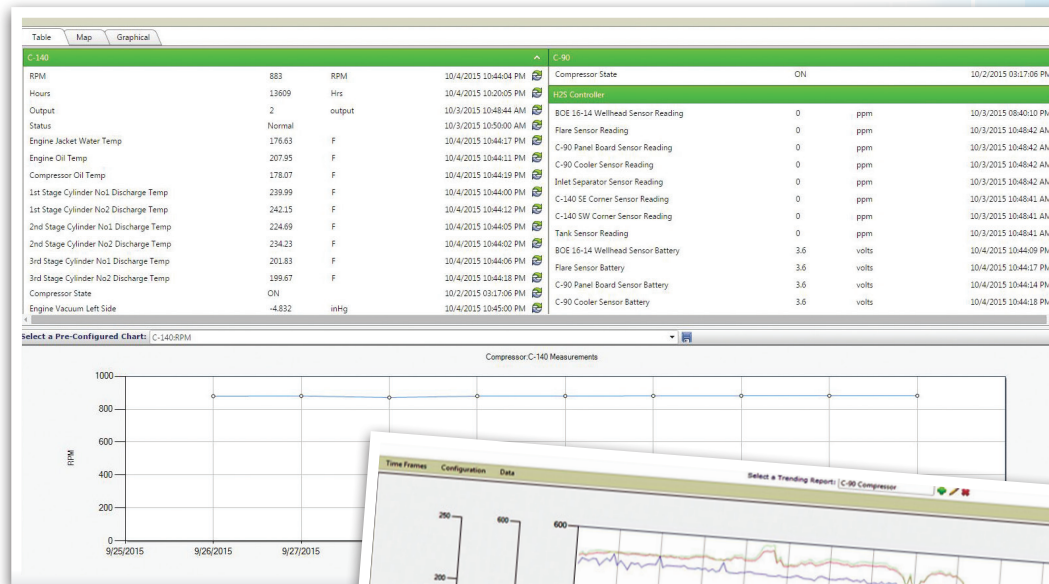
Tank Battery Monitoring and Maintain EPA Compliance



Protect the environment and assets

Key Features

- Alerting (SMS, email, callout) of high and low tank levels
- Auto Shut-in of wells at critical high-high or low-low levels
- Monitor fluid levels within your firewall in case of leaks or storm surges
- Provisions for Shut-in on any measurement such as pressures, flows, H2S ppm, LEL ppm, VRU and Flare malfunctions, etc.
- View all reports and trends on Bluetick's Graphical User Interface (GUI)



Compressor Up-Time and EPA Compliance

Bluetick's compressor solutions ensure maximum uptime which improves production while maintaining optimal SLA requirements. Field mechanics are immediately notified when an error condition occurs. Work order management can be improved to ensure that the right technician with the right tools and parts is quickly deployed to the site.

- Monitor emissions for air quality
- Report air quality for EPA regulatory requirements
- Keep records for notifications, maintenance, and that compressor engines meet EPA standards

Whether operating your own compressors or servicing your customers, Bluetick will ensure maximum up-time and compliance of your assets.



Report		
Measurements		
Customer Sales Point #2: Differential Pressure(inH2O)	2011-11-02 01:00	1858.56
Customer Sales Point #2: Flow Rate(MCF/day)	2011-11-02 01:00	2
Customer Sales Point #2: Last Calculated Volume(SCF)	2011-11-02 01:00	596.66
Customer Sales Point #2: Plate Size(in)	2011-11-02 01:00	55.13
Customer Sales Point #2: Static Pressure(psia)	2011-11-02 01:00	320404.14
Customer Sales Point #2: Temperature(F)	2011-11-02 01:00	2794.01
Customer Sales Point #2: Total Accumulated Volume(MCF)	2011-11-02 01:00	11.77
Customer Sales Point #2: Yesterday's Volume(MCF)	2011-11-02 02:00	2584.25
Customer Sales Point #2: Differential Pressure(inH2O)	2011-11-02 02:00	1793.46
Customer Sales Point #2: Flow Rate(MCF/day)	2011-11-02 02:00	2
Customer Sales Point #2: Last Calculated Volume(SCF)	2011-11-02 02:00	599.29
Customer Sales Point #2: Plate Size(in)	2011-11-02 02:00	54.69
Customer Sales Point #2: Static Pressure(psia)	2011-11-02 02:00	320483.3
Customer Sales Point #2: Temperature(F)	2011-11-02 02:00	2794.01
Customer Sales Point #2: Total Accumulated Volume(MCF)	2011-11-02 02:00	11.79
Customer Sales Point #2: Yesterday's Volume(MCF)	2011-11-02 03:00	2601.16
Customer Sales Point #2: Differential Pressure(inH2O)	2011-11-02 03:00	1796.67
Customer Sales Point #2: Flow Rate(MCF/day)	2011-11-02 03:00	2
Customer Sales Point #2: Last Calculated Volume(SCF)	2011-11-02 03:00	602.12
Customer Sales Point #2: Plate Size(in)	2011-11-02 03:00	54.65
Customer Sales Point #2: Static Pressure(psia)	2011-11-02 03:00	320592.9
Customer Sales Point #2: Temperature(F)	2011-11-02 03:00	2794.01
Customer Sales Point #2: Total Accumulated Volume(MCF)	2011-11-02 03:00	11.25
Customer Sales Point #2: Yesterday's Volume(MCF)	2011-11-02 04:00	2550.03
Customer Sales Point #2: Differential Pressure(inH2O)	2011-11-02 04:00	1773.83
Customer Sales Point #2: Flow Rate(MCF/day)	2011-11-02 04:00	2
Customer Sales Point #2: Last Calculated Volume(SCF)	2011-11-02 04:00	604.28
Customer Sales Point #2: Plate Size(in)		
Customer Sales Point #2: Static Pressure(psia)		

Electronic Flow Meter Monitoring

Accurate production reporting is crucial to your operations. Account for your production and understand the operational status of your fields. This timely information affords your accounting department the knowledge they need to receive and make payments. Field personnel will be alerted to take the preemptive steps required to maximize production, reduce down time, and efficiently manage routes.



Bluetick EFM solutions will provide the necessary data samples to account for your production.



Custom Solutions

Here are some additional applications that Bluetick supports. Our customers frequently request new solutions every day. If you don't see your application listed here, please give us a call to discuss how we may incorporate your requirements into a Bluetick RMC solution.

- Emission Systems (Rice-Neshap, Quad O)
- Gas Processing Plants
- Variable Frequency Drives
- Power Generation
- Cathodic Protection Systems
- Pump-Controllers
- EOR Processing Plants
- Pipelines
- PLCs

The Bluetick Remote Monitoring and Control (RMC) system is an innovative digital oilfield solution which is providing economic value to the E&P market. The RMC system seamlessly gathers data from sensors, transducers, and field equipment, transports that data to its Network Operations Center, then securely stores and distributes it to operator staff for engineering analysis and immediate follow up of alarms. By implementing RMC, operators can increase oil and gas production, improve workforce management, and enhance environmental safeguards.

The Bluetick RMC system connects you directly to your wells, compressors, tanks, environmental monitors, flow meters, and other field assets. That information is readily available on your desktop, mobile phone, or both. The RMC software allows you to establish simple or complex rules for each data point and even create secondary measurements from available data. Our powerful software suite gives all the tools you need to maximize production and ensure safe operations.

The Bluetick RMC is the definitive digital oilfield solution. Contact us today so that we can demonstrate how the system can unleash your field operations.

Customer Support

Website: support.bluetickinc.com

Telephone: 1-877-283-3442

On Site: Contact us for scheduling

Request information

1-877-283-3442

www.bluetickinc.com

Locations

MIDWEST REGION

Texas

Houston

1-877-283-3442

NORTHEAST REGION

Pennsylvania

Canonsburg

1-877-283-3442 ext. 123

WESTERN REGION

Colorado

Denver

1-877-283-3442 ext. 201

CANADA

Alberta

Calgary

1-877-283-3442 ext. 126

SOUTHEAST REGION

North Carolina

Headquarters

Greensboro

336-294-4102

1501 Highwoods Blvd, Suite 102

Greensboro, NC 27410

Mississippi

Columbia

1-877-283-3442 ext. 121

811 Main Street, Suite 9

Columbia, MS 39429

